



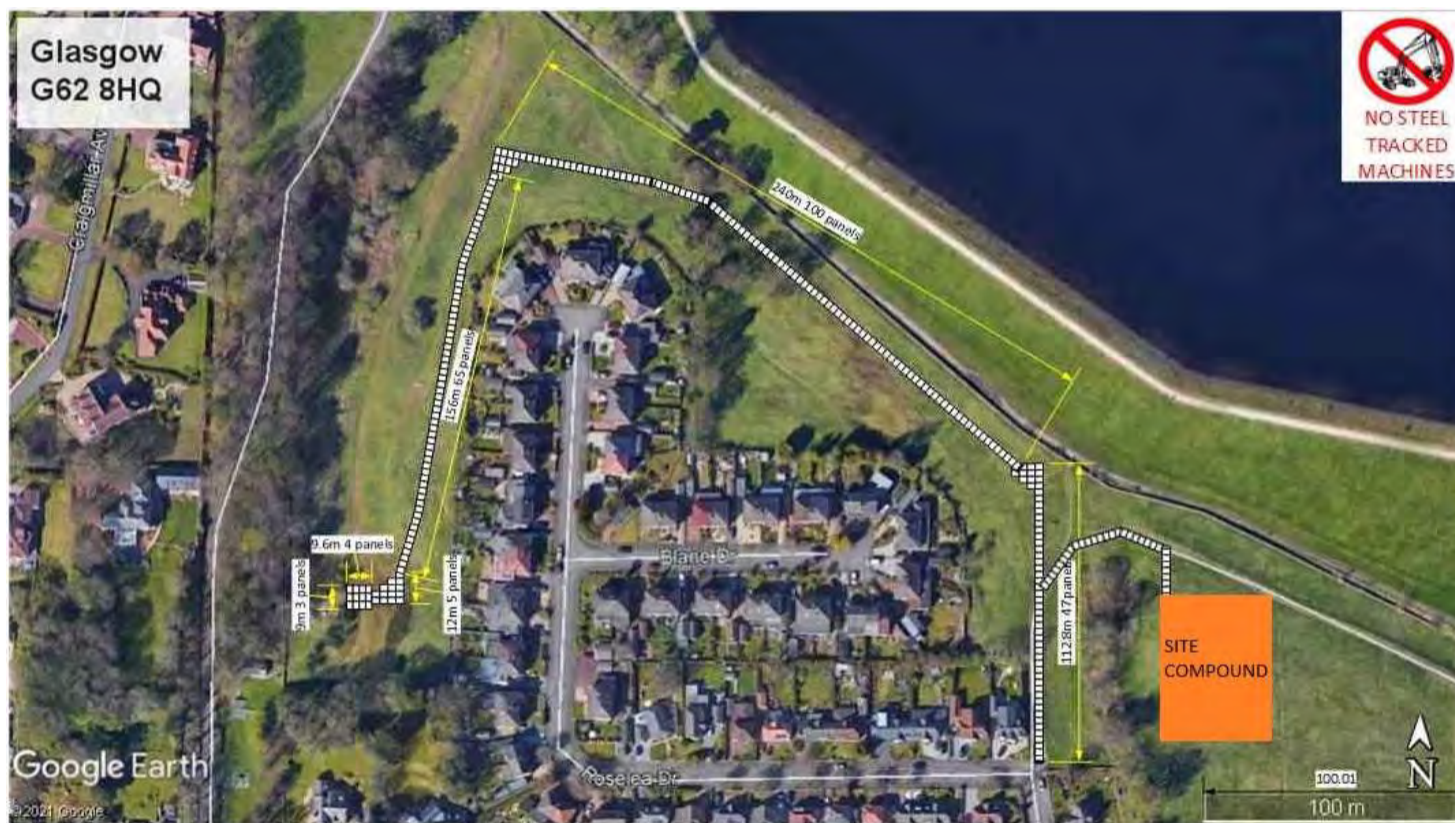
# Scottish Water

Trusted to serve Scotland

# Taking care of your water supply

## Site Compound and Trackway Access Routes

The Access track from Roselea Drive to be temporarily upgraded with ground mats to run to the PRV works site at Commissioners Road, the Craigmaddie Valve Tower and the Site Compound.



Ref: Capital/507951/George Leslie

 [scottishwater.co.uk](http://scottishwater.co.uk)

 [customer.services@scottishwater.co.uk](mailto:customer.services@scottishwater.co.uk)

 0800 0778778

 [facebook.com/scottishwater](https://facebook.com/scottishwater)

 [@scottish\\_water](https://twitter.com/scottish_water)