



**Scottish
Water**

Trusted to serve Scotland

**Scottish
Water**

Trusted to serve Scotland

scottishwater.co.uk

Taking care of your sewer network in Renfrew

Welcome



Thank you for attending today's information event about our proposals to reline the sewer from Ferry Road to the existing pumping station at the end of North Lodge Road.

We have information on: -

- Update on current project on King's Inch Road
- Why we are doing the work / What we will be doing
- Where work will take place
- The approximate duration of the work
- Road closure information
- Who is doing this work
- How you can keep in touch





**Scottish
Water**

Trusted to serve Scotland

History

The existing sewer rising main along King's Inch Road had burst multiple times and required to be upgraded by using a special relining technique.



Sewer burst incident on Kings Inch Road December 2023

The sewer is a large trunk rising main sewer which is pressurised. When it has burst, the impact on the community has been significant given the size of the sewer and the pressure the waste water is under. We developed a long term solution to drastically reduce the risk of bursts.



**Scottish
Water**

Trusted to serve Scotland

Update on current project

We have completed the first phase of relining 840m of the existing sewer rising main along King's Inch Road from Crofton Way to Ferry Road.



The liner being fed into the access pit



We are now completing pressure testing of the newly lined sections of pipework before transferring the flows back from the overland pipe.

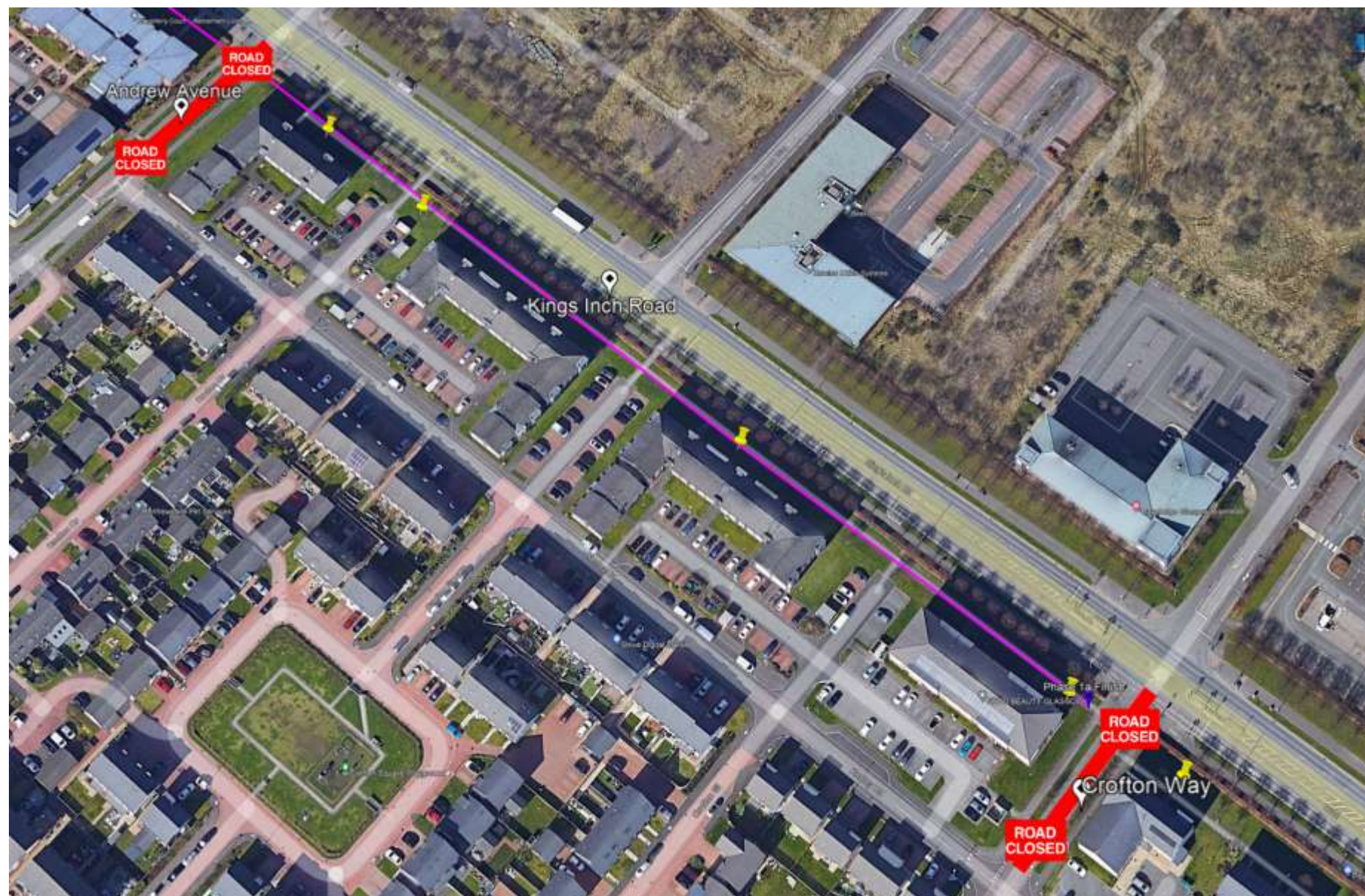


**Scottish
Water**

Trusted to serve Scotland

Update on current project

After we have transferred flows we will disconnect the overland bypass pipe and reopen Andrew Avenue and Crofton Way by Mid December 2024.



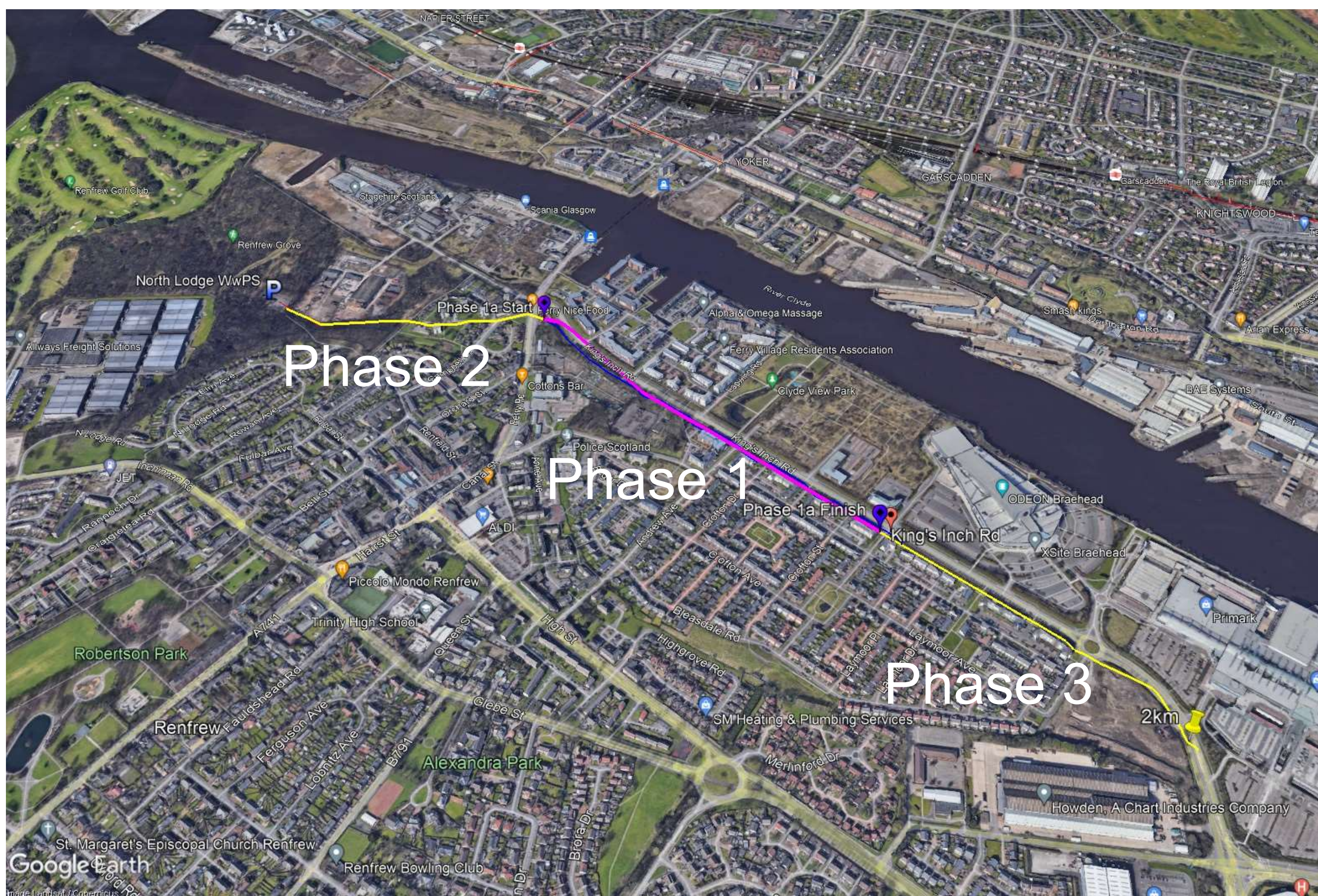
After we have removed the overland bypass pipe, we will start our reinstatement works. We will replant trees and bushes that have been removed and top soil areas where the grass has been disturbed. We will have to return in spring 2025 when the grass growing season starts to sow the new grass seed



**Scottish
Water**

Trusted to serve Scotland

Phases of work



= Current Phase 1



= Future phases

After we complete phase 1, we will move onto Phase 2.

Phase 3 is going through the Scottish Water's Governance approval process.

Keep up to date at www.scottishwater.co.uk/kingsinchroad



**Scottish
Water**

Trusted to serve Scotland

Why are we doing it?

The existing underground sewer rising main needs to be relined as a priority due to the number of bursts that have occurred.

CCTV Survey image of the rising main



The allotments flooded in 2023



Burst incident on Kings Inch Road 2023



Burst in wooded area in 2023



Burst incident on Campbell Street / Ferry Road November 2023

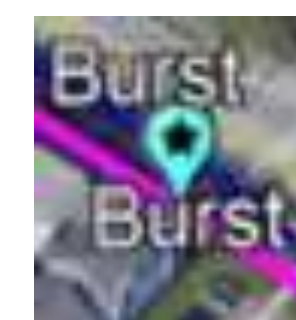
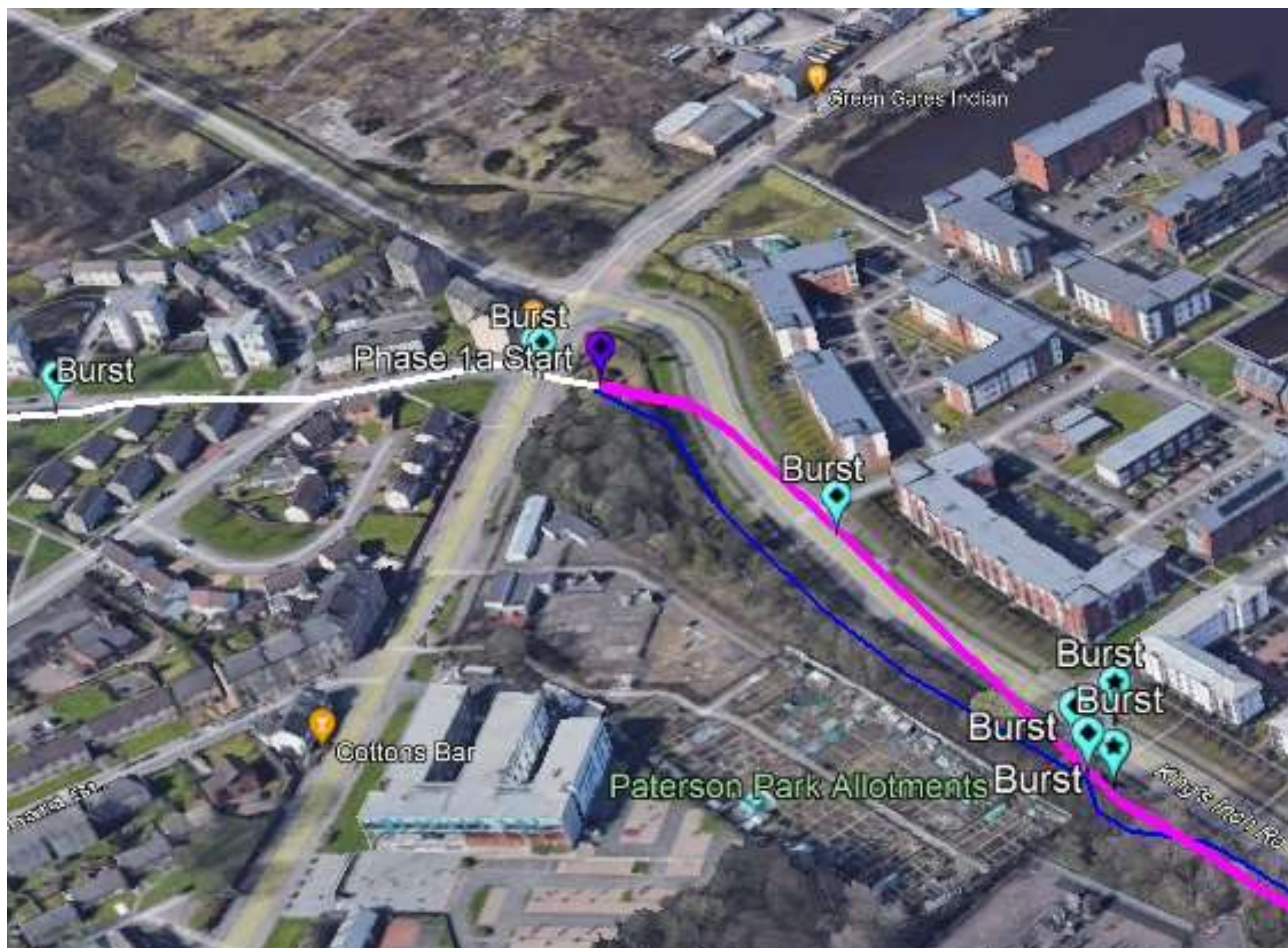




Scottish Water

Trusted to serve Scotland

Burst map



= Burst

The map shows the locations of the bursts



Burst pipe sections



Burst pipe sections



We are starting this planned relining work now to avoid the risk of unplanned interruptions and pollution incidents. This £4 million investment for phase 2 will provide greater structural integrity to the waste water infrastructure for many years to come.



Showing Fracture along bottom of pipe



Scottish Water

Trusted to serve Scotland

When will the works start?

The works are expected to start in January 2025 and be completed by October 2025.

To protect the environment, we will use a temporary overland pipeline to pump the sewer flows while we work on the existing sewer. This will be removed at the end of the project.



The work is being managed by our alliance partner Caledonia

CALEDONIA WATER ALLIANCE



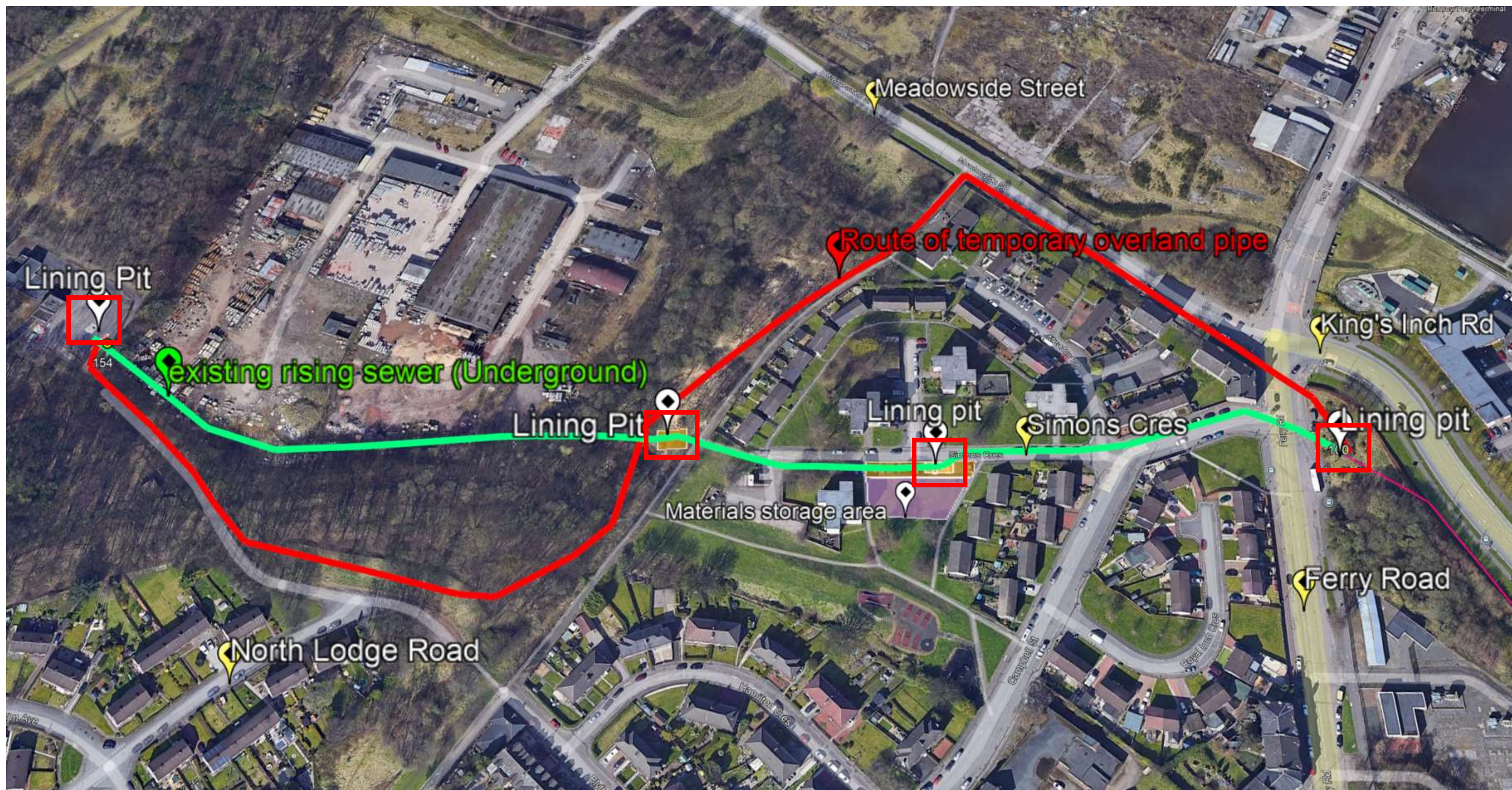
Water Alliance (CWA) and relining will be carried out by our contractor Environmental Techniques. Any future bursts will continue to be managed by Scottish Water's contractor for emergency/reactive work.




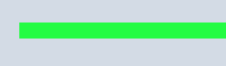

Scottish
Water

Trusted to serve Scotland

Overview of proposals



Key

-  = Route of temporary overland pipe
-  = Section of existing rising main to be relined
-  = Proposed access pit location to insert liner

The above plan shows the section of rising main sewer to be relined. The temporary overland sewer will be set up along Meadowside Street and through the wooded area. The pipe will be welded to prevent any leaks and odours and secured by heras fences. Trees will be required to be removed along the route of the temporary bypass pipe. This work is expected to take place in December 2024. We will replant trees at the end of the project.





**Scottish
Water**

Trusted to serve Scotland

Relining Process

- To strengthen the existing pipe, we are using a special relining method of construction.



- Relining is a specialised technique which renews the existing sewer pipe with a new inner wall.
- This new lining is an innovative way of making the pipe 'like new' and prolonging the working life of the sewer. This proven technique was chosen as it avoids digging up the entire length of Simons Crescent and Campbell Street, significantly reducing the disruption for the local community.
- We are able to carry out this technique from access pits (points to access the sewer) to feed the new liner in.



Scottish
Water

Trusted to serve Scotland

What happens next



1) The existing site cabins office area already set up in vacant land off Station Road will be used for the site office for Phase 2.



2) Large deliveries are made to site.



3) The area is cleared of vegetation / trees to make space for route of the overland temp bypass pipe in December 2024



4) The working areas are fenced off and road signage is installed.



5) The temporary overland pipe is laid out across the area and then welded together.



**Scottish
Water**

Trusted to serve Scotland

What happens next



6) Access pits are required to feed the liner in. When we excavate these pits, the ground is firstly secured by piling metal sheets into the ground. This phase can be noisy.



7) Once the sheet piling is installed, we then excavate to expose the existing pipe. Which is then cut open and repaired for lining. Upon completion of the lining works, a new section of pipework is installed prior to reinstatement.





**Scottish
Water**

Trusted to serve Scotland

Relining Stages

- Stage 1.

A temporary overland bypass pipe is installed and flows are transferred.



- Stage 2.

Pits are excavated either side of the section to be lined to access the existing sewer.



- Stage 3.

Scaffolding is built over the pit and the new liner is fed into the existing sewer from a crane to start the lining process.





**Scottish
Water**

Trusted to serve Scotland

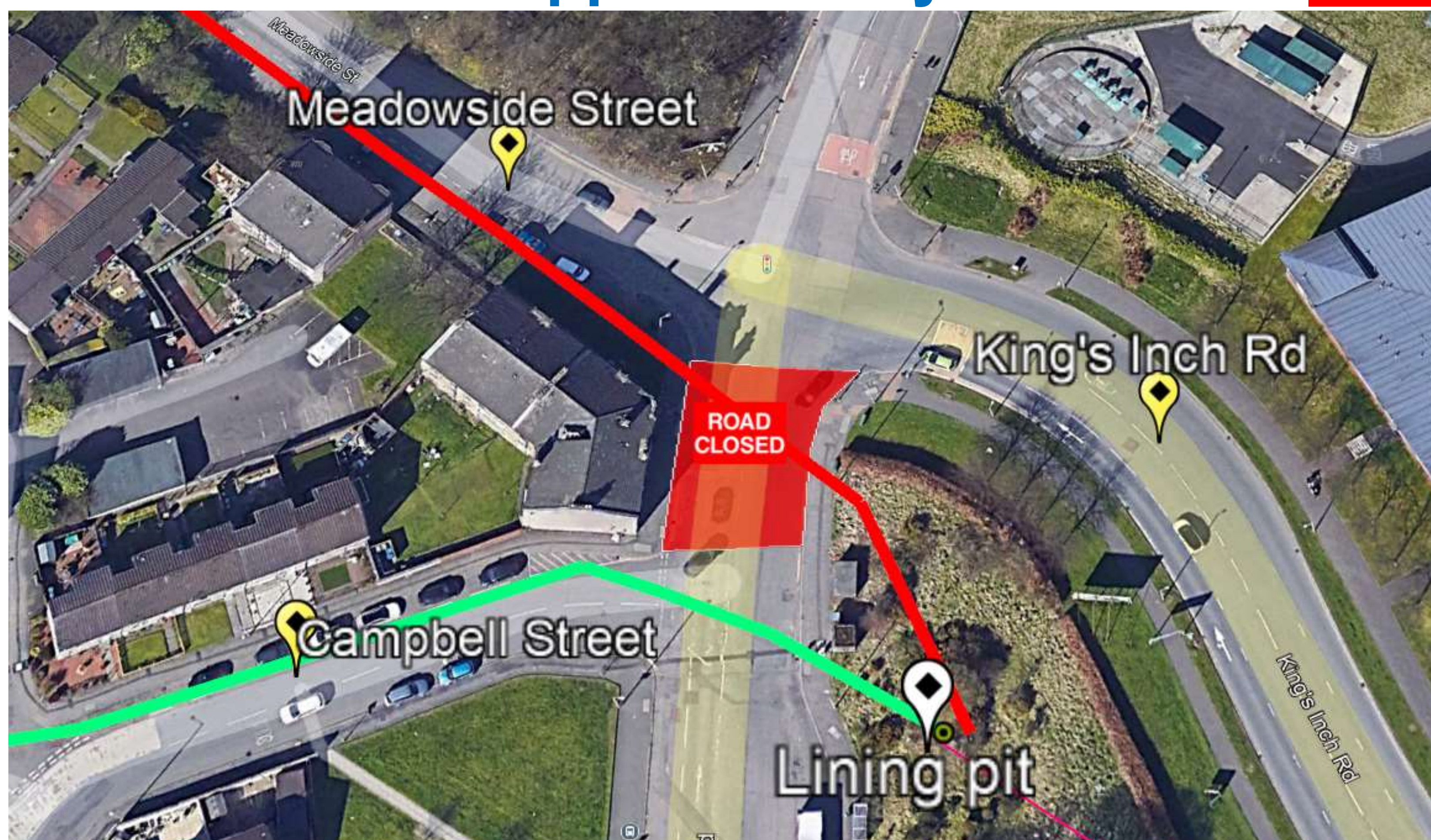
Ferry Road closure dates

We require to lay the overland bypass pipe across Ferry Road. To do this safely we require to close off a short section of Ferry Road

Road closures

- **Ferry Road** (junction of King's Inch Road to junction with Campbell Street)
- **March 2025 for approximately 8 months**

**ROAD
CLOSED**



**Pedestrian
access will
remain
open**



We reviewed various methods to keep the road open, however, there are too many utilities in the road to install the bypass pipe below ground. It is also too long to span a pipe bridge over and lastly, pipe ramps are not permitted to be used on the public roads.

**Diversion signs will be
in place for the vehicle
diversion route**



Buses - Buses services will be affected by our works. Please refer to your local bus provider for updates once the dates of the road closure are confirmed.



**Scottish
Water**

Trusted to serve Scotland

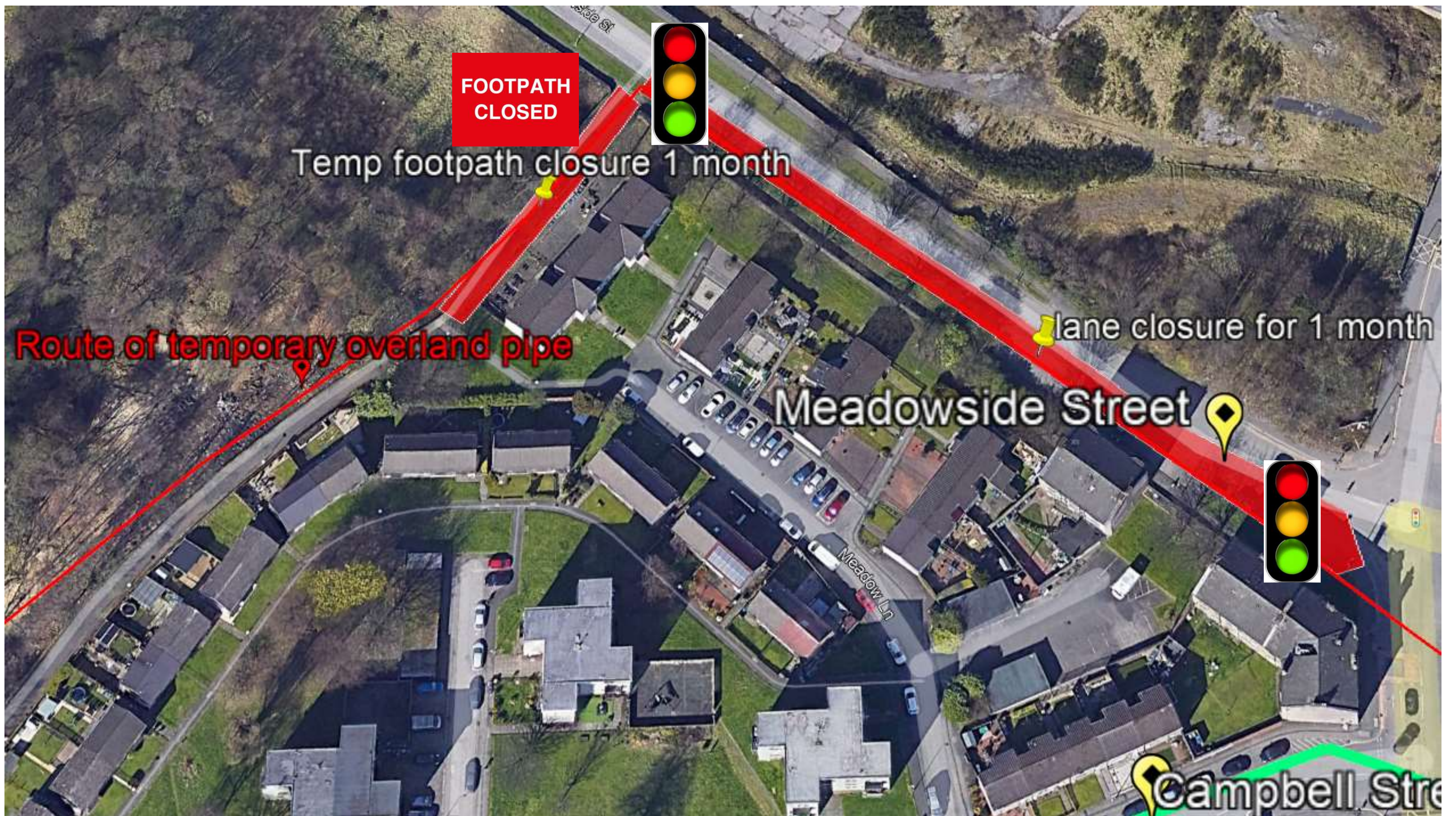
Lane closure dates

Lane closures



- **Meadowside Street**
One lane closure Feb /
March 2025 for 1 month.

One lane will remain open with
use of temporary traffic lights



**FOOTPATH
CLOSED**

Footpath closures

- **Path off**

**Meadowside Street — path
closure Feb / March 2025
for 1 month**






**Scottish
Water**

Trusted to serve Scotland

Pedestrian Routes

- Pedestrian routes over the temporary pipe bridge.
- The temporary overland pipe will cross over Ferry Road, along Meadowside Street and through the wooded area. To safely cross over this, we will create temporary walkways as shown on the map below at the yellow  stars.



The temporary walkways (shown on the left) will be created at the yellow stars shown on the map to cross over the overland bypass pipe.



**Scottish
Water**


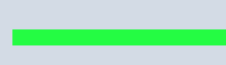
Trusted to serve Scotland

Access pit Simons Crescent

• Access pit Simon Crescent



Key

-  = Route of temporary overland pipe
-  = Section of existing rising main to be relined

**We require to use
some car parking bays
off Simons Crescent**

**to excavate the access pit over
the existing underground rising
main. The grassed area is
required to store materials.
The area will be returned to
normal on project completion.**





**Scottish
Water**

Trusted to serve Scotland

Businesses open as usual



**Scottish
Water**

Trusted to serve Scotland

scottishwater.co.uk

Local businesses
open as usual while
we are working



Please continue to support your local businesses while we are working on this essential project.

The dates provided today are approximate dates and may be subject to change, depending on weather and working around existing services. We will write to residents near each access pit two weeks before starting work.

Keep up to date at
[www.scottishwater.co.uk/
kingsinchroad](http://www.scottishwater.co.uk/kingsinchroad)



Scan to receive
the latest project
text alerts



**Scottish
Water**

Trusted to serve Scotland

Tankering for sewer drain-down

- We require to drain down the existing sewer for 4-5 weeks in March/April 2025 in order to make connections into the existing pipeline. This means there will be an increase in tankers running to the pumping station at North Lodge for a period of 12 hours per day for this duration. There will also be an increase in construction traffic to and from the pumping station for the duration of the project.



- You may see additional lighting near the pumping station during night working. We will of course endeavor to keep this to a minimum and direct lighting away from properties.



**Scottish
Water**

Trusted to serve Scotland

Emergency Work



The previous bursts on the rising main have been managed by Scottish Water's contractor for emergency/reactive incidents. They will continue to manage any future bursts and any claims from damage caused by the bursts.



**Scottish
Water**

Trusted to serve Scotland

Minimising the impact of the works

We have planned in various measures to help reduce the impact of the works, these include: -

- **Noise** - Echo barriers will be placed around the generators and boilers to help reduce the noise impact.
- **Pedestrian Access** - Pedestrian access ramps will be used to ensure pedestrians can still access over the temporary pipe onto Ferry Road and Meadowside Street.
- **Trees** - We require to remove along the route of the over-land bypass pipe. We will replant new trees at the end of the project.
- **Site compound** - We have located this off Station Road. The site compound will have 24 hour security on and may require generators to be run for lighting.
- **Working hours**—Our normal working hours will be between 8am-6pm Monday to Friday. We will require to work additional hours during the lining and tankering operations. We will write to the affected residents before we start these works.



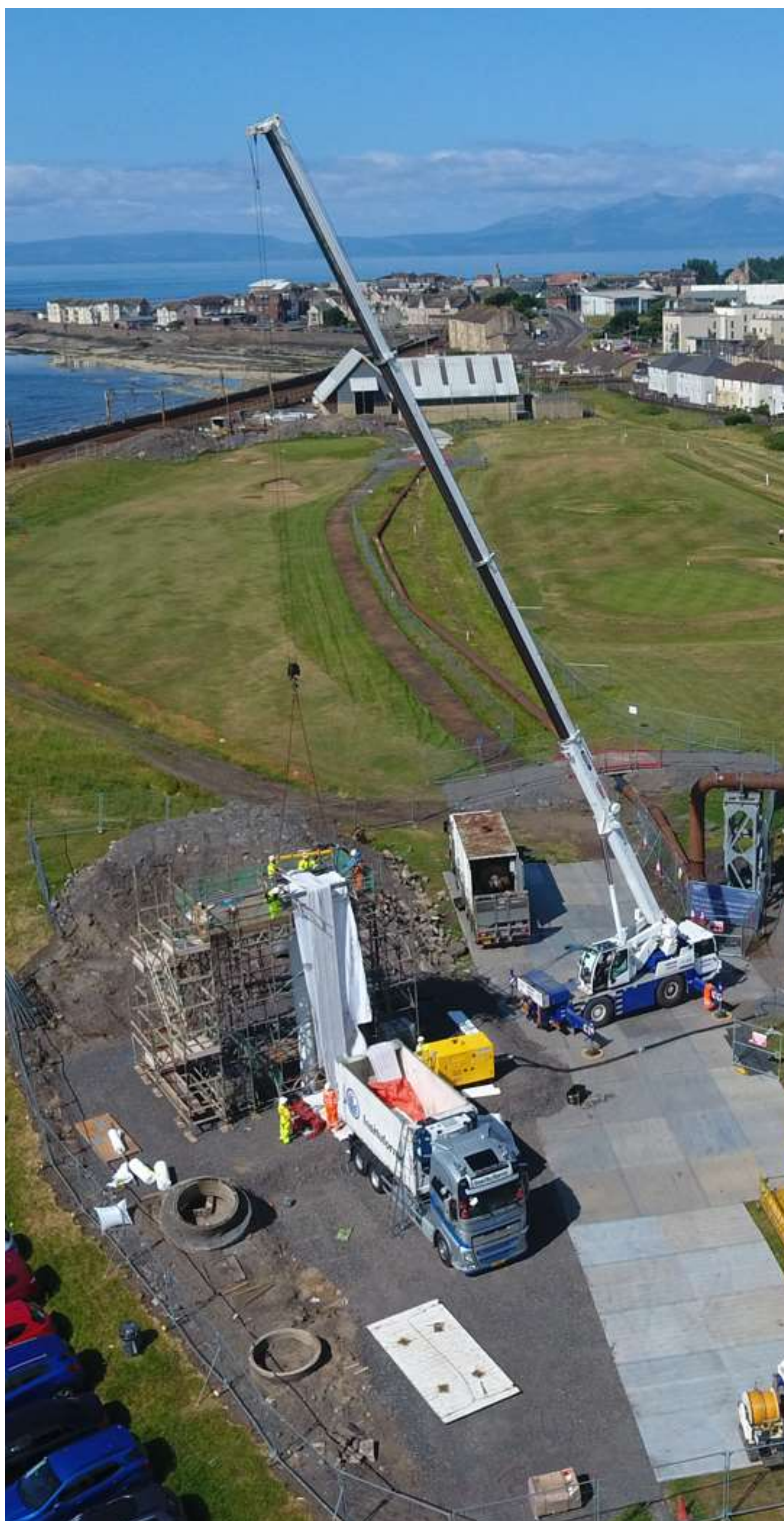


Scottish Water

Trusted to serve Scotland



Scan to receive the latest project text alerts



- We will write to you two weeks before we start the work.
- Residents living adjacent to the access pits will be offered a free property survey, before and after the works to provide peace of mind.



- We will keep in touch as our project progresses and will post regular updates on our dedicated webpage: -

[www.scottishwater.co.uk](http://www.scottishwater.co.uk/kingsinchroad)
[/kingsinchroad](http://www.scottishwater.co.uk/kingsinchroad)