

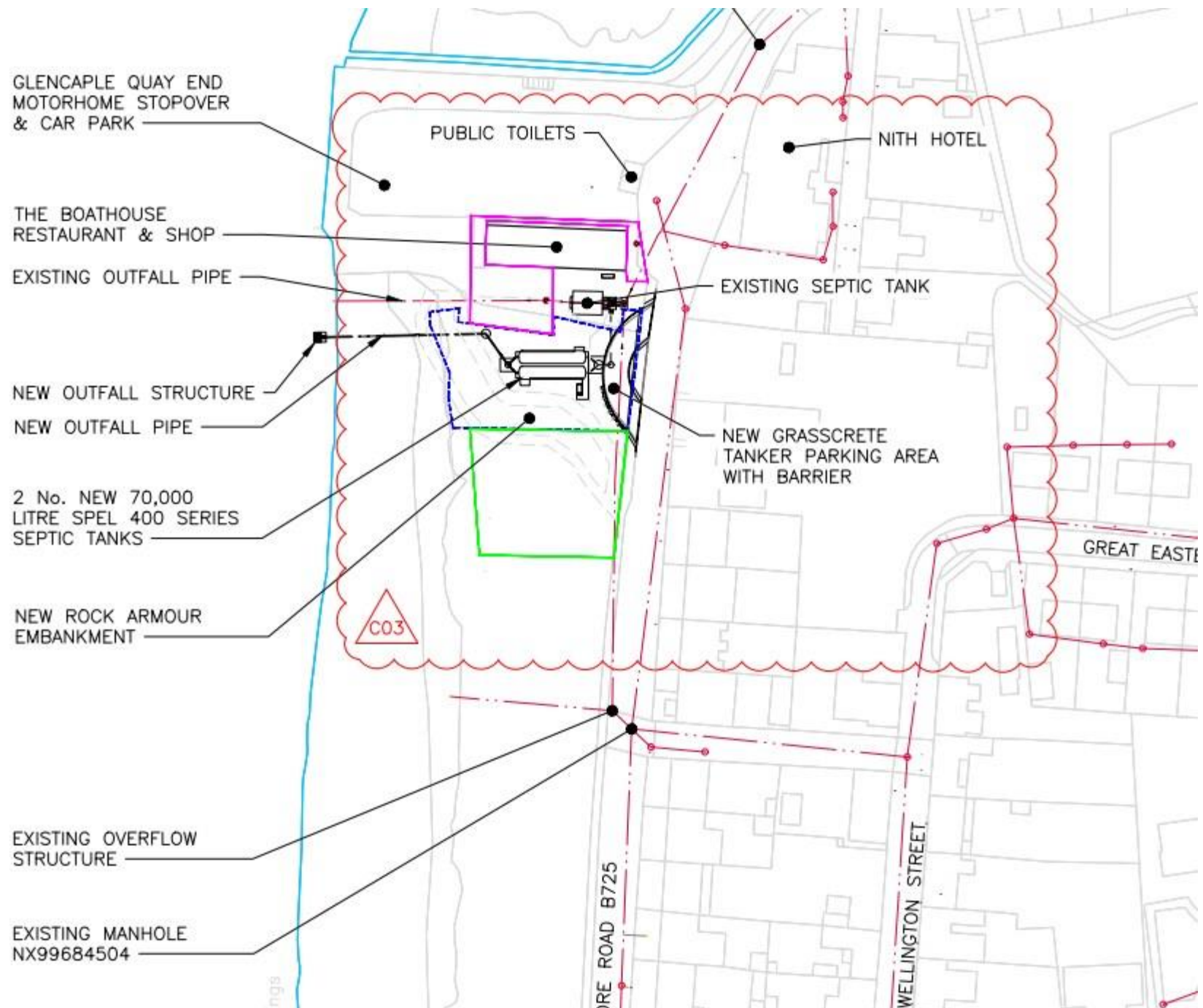


# Scottish Water

Trusted to serve Scotland

## Taking care of your waste water network

### Work Location, Site Compound & Traffic Management



- A site compound will be erected within the green highlighted area. This will allow construction vehicles and plant safe access to site without the need to disrupt local amenities. There should be no requirement for construction vehicles to park within the village.
- The work will not impede access to businesses or residential properties. Any areas occupied will be made safe, secure and fully reinstated upon completion.
- We have a dedicated NRSWA team to assure compliance with legislation.

 [scottishwater.co.uk](http://scottishwater.co.uk)

 [customer.services@scottishwater.co.uk](mailto:customer.services@scottishwater.co.uk)

 0800 0778778

 [facebook.com/scottishwater](https://facebook.com/scottishwater)

 @scottish\_water