

Welcome

Thank you for attending today's information event about our proposed investment on the sewer network in Dalgety Bay Fife.

We have information on: -

- Why the investment is needed
- What is proposed
- Where work is proposed to take place
- The approximate duration of the work
- How you can keep in touch

Need for Investment

Sealstrand and St Bridgets Brae storm overflows, located in Dalgety Bay, have been identified as two high priority sites by Scottish Water and SEPA.

The existing storm overflows include high-level spill pipes that discharge into the Firth of Forth.

Unscreened spills occur from these storm overflows during the 5-year return period event, which has resulted in numerous complaints regarding Sewer Related Debris (SRD) from members of the public.

Sewer upsizing to be carried out from Couston Drive to St Bridgets Brae to reduce the risk of combined sewer flooding in that area.

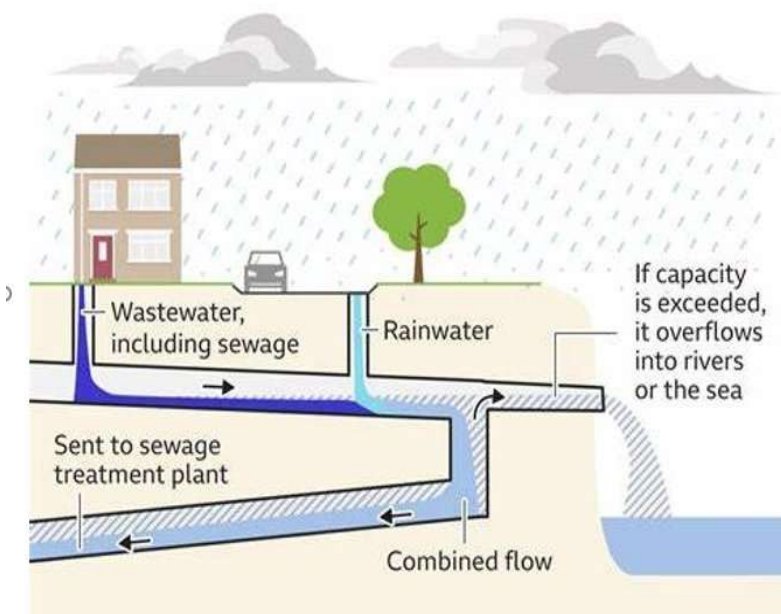
£10.7m Investment.



What is a Storm Overflow (SO)?

A storm overflow is an essential part of the sewer network. It is a vital piece of infrastructure which acts as a relief point, helping to reduce the risk of properties and streets being flooded during storm events when pipes become full or when issues occur. SOs are licensed by Scottish Environment Protection Agency to spill under certain conditions, and we work hard to comply with these licences.

SOs are designed to release pressure on the network from rain using overflows to rivers and the sea. When there are overflows from a rainstorm, less than 1% of this is waste water from toilets. CSOs are licensed and regulated by SEPA



SO Myth Busters

- SOs are not pumping or dumping raw sewage into rivers/sea.
- Water discharged from a SO during intense rainstorms is very dilute, with less than 1% waste water from toilets.
- Discharges consist mainly of run-off from roads and roofs, and grey water from household appliances.
- Many factors contribute towards water quality in rivers, including pollution from agriculture, urban and industrial pollution and private sewage systems.
- We cannot simply get rid of SOs – they are there to safely carry flood water away from homes, businesses and roads.

DRAINING THE RAIN



Scottish
Water

Scotland's water quality is at its highest level for over 15 years with 87% of waterbodies now achieving at least 'good condition'.

We know our sewer network will continue to come under increasing pressure from the combination of climate change and people flushing inappropriate items down the toilet that's why Scottish Water have targeted extra investment specifically in locations where every pound spent will deliver real benefits to communities and the environment.



Dalgety Bay

Did you know – Scottish Water's Improving Urban Waters Routemap has been developed and is available to view at [Scottishwater.co.uk](https://www.scottishwater.co.uk)



Improving Urban Waters
[ScottishWater.co.uk/DrainingTheRain](https://www.scottishwater.co.uk/DrainingTheRain)

Tree Clearance & Reinstatement Plan – Sealstrand Site

To the east of the site is a continuation of the Crow Hill woodland area. To accommodate the works, there is a requirement to remove selected trees which will be used to both allow plant access and installation of the new infrastructure.

There is a developed planting & biodiversity plan for the site once the works have been completed, which comprises of the planting of native woodland trees (> 250no.) and native meadow seeding.



Location of Investment



Storm Overflow (SO) Locations (Google Maps)



Traffic Management Overview



Traffic Management Overview

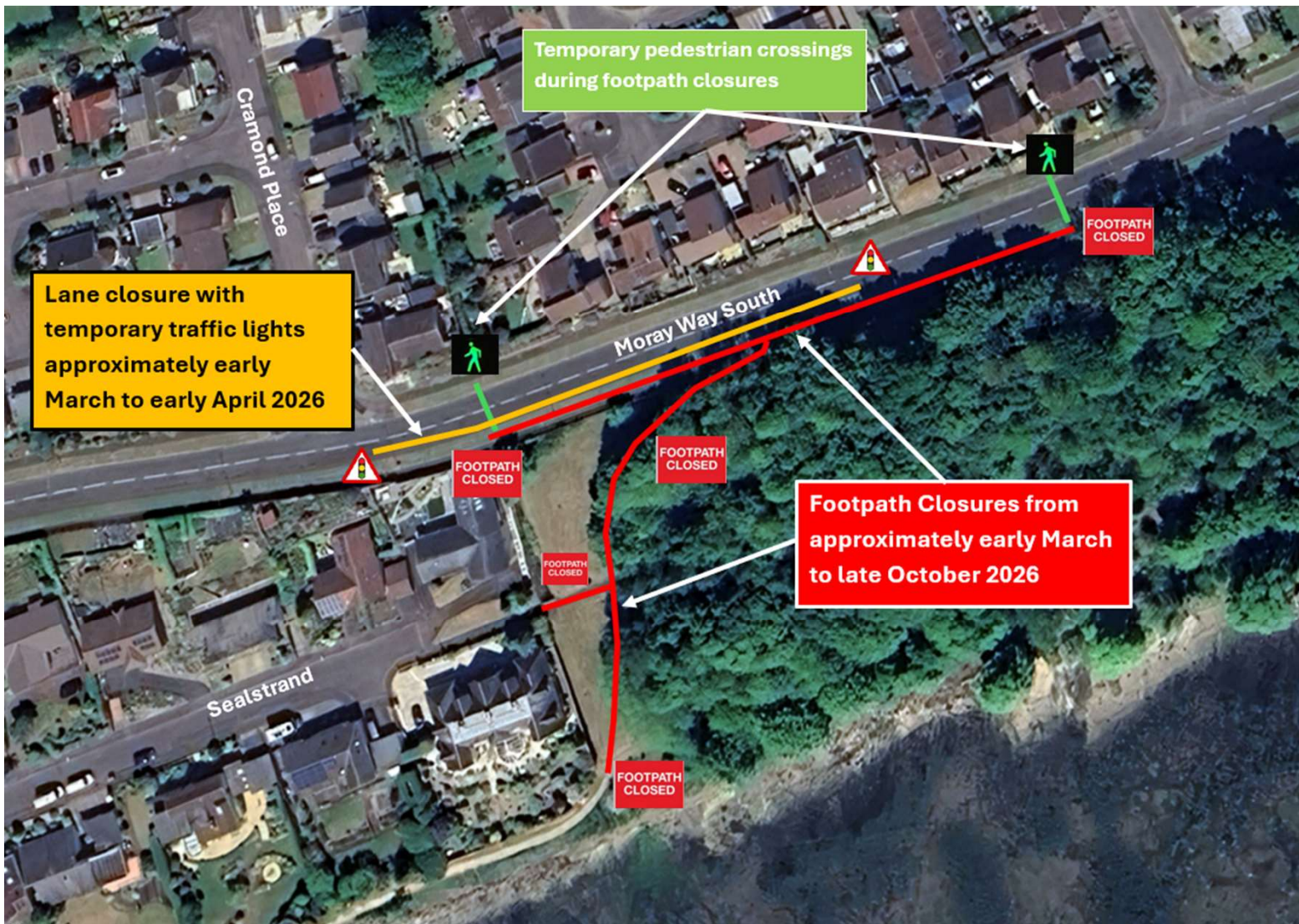


There is one bus stop within our closure when we close of Moray Way South. We are liaising with Bay Travel and will provide an update when we issue the prestart communications in January.



Improving Urban Waters
ScottishWater.co.uk/DrainingTheRain

Traffic Management Overview



DRAINING THE RAIN



Scottish
Water

Who we are

Scottish Water is a publicly-owned company, responsible for providing water and waste water services to millions of customers across the country.



**Scottish
Water**

Trusted to serve Scotland

We work with trusted partners to deliver large scale investment.

Caledonia Water Alliance (CWA) will be the principal contractor for the work that is the focus of today's event.

**CALEDONIA
WATER ALLIANCE**



WASTEWATER

WATER

MEICA

Improving Urban Waters

[ScottishWater.co.uk/DrainingTheRain](https://www.ScottishWater.co.uk/DrainingTheRain)

Project Scope - St Bridgets Brae

Installation of a replacement storm overflow with a 5m powered screen and associated pipework and manholes.

Located at the public grassed area adjacent to Moray Way South, with the connecting pipework spanning across Jubilee Park & Moray Way South

This solution will ensure spills up to and including the 5-year return period will be screened and reduce annual spill frequency and duration to the Firth of Forth when compared to the baseline.

This addresses both functional and aesthetic requirements and has approval from SEPA.



Project Scope – Sealstrand

Installation of a replacement storm overflow (SO) with a 4m powered screen and associated pipework and manholes.

The Sealstrand SO is located on a public grassed area located east of Sealstrand and south of Moray Way South carriageways

This solution will ensure spills up to and including the 5-year return period will be screened and reduce annual spill frequency and duration to the Firth of Forth when compared to the baseline.

This addresses both functional and aesthetic requirements and has approval from SEPA.



Project Scope – St Bridgets Brae Flooding Issue

Approximately 200m of new and upsized sewers will be constructed from Couston Drive to St Bridgets Brae to reduce the risk of combined sewer flooding up to and including a 30-year return period storm event.

Ground reprofiling will be undertaken to lessen the impact of surface water flooding on customers.

To address internal flooding.



Key Programme Dates

Phase 1 – Construction of temporary road through Jubilee Park connecting Moray Way South & Inchview Gardens and Site Compound. Two-way Traffic Lights with a lane closure will be required to construct new vehicle access from the existing roads (6 weeks duration approx.). Footpath Closure through Jubilee Park will commence for public safety and be closed for the full duration of the projects. **Current start date – late Jan 2026.**

Phase 2 – Construction of works vehicle access at Sealstrand Site via Moray Way South. Requirement for two-way traffic lights and footpath closure at Moray Way South to accommodate works (5 weeks). **Current start date – late early March 2026.**

Phase 3 – Works can commence at St Bridgets Brae site. A road closure along Moray Way South is required to accommodate the works, which will be phased to allow St Bridgets Brae to junction to remain open for as long as possible. The first phase of the road closure will be for 15 weeks, where most of the engineering works will take place. **Current start date – early April 2026.**

Phase 4 – following on from Phase 3, a requirement to extend the road closure past the Moray Way South & St Bridgets Brae junction to allow for the final engineering works to be completed for a further 8 weeks. **Current start date – early July 2026.**

Phase 5 – To allow the final connections to the existing sewer network, a closure of St Bridgets Brae only will be required a few weeks later (approx. 2 weeks duration). **Current start date – early Dec 2026.**

Phase 6 – Flooding Project to start on site – **Jan 2027**

Phase 7 – Traffic Management to allow removal of temporary vehicle accesses at Moray Way South & Inchview Gardens. **Current start date – late summer 2027.**

Minimising the impact of the works

Scottish Water is working hard to future proof the waste water services for Fife. The proposed upgrade works will provide a huge benefit for the area and the environment, now and for years to come. We appreciate that construction works of this nature can cause some disruption to the community going about their everyday lives. We would really appreciate your patience and ask for your understanding while our delivery team carry out these vital works as quickly and safely as possible. To help minimise any disruption as far as possible, we have planned in various mitigation measures, including: -

Noise - Echo barriers will be placed around any generators to help reduce the noise impact.

Pedestrian Access – Pedestrian access will be maintained around our work.

Site Compound – Our site compound will be based in Jubilee Park adjacent to Moray Way South.

Working hours – Our normal working hours will be between 8am – 6pm Monday to Friday. We may require to work additional hours/weekend working depending on how works progress. We will keep everyone updated.

Keeping in Touch

Scottish Water and CWA are committed to keeping you and the local community fully informed and engaged with the work we are doing.

We hope today's event has given you an understanding of our plans and an opportunity to discuss any questions or concerns. Scottish Water is a publicly owned company, accountable to the Scottish Parliament and the people of Scotland. We operate within a strict policy and regulatory framework, but we are making this investment for our current and future customers in this area.

If you want to continue to keep in touch as our project progresses, please visit

https://www.scottishwater.co.uk/Dalgety_Bay or call our Customer Helpline on 0800 0778778 quoting Capital/543746/Dalgety Bay.

We welcome your feedback

Dalgety Bay Storm Overflow Improvements



Please scan the QR Code with
your mobile phone to access the
feedback form.

